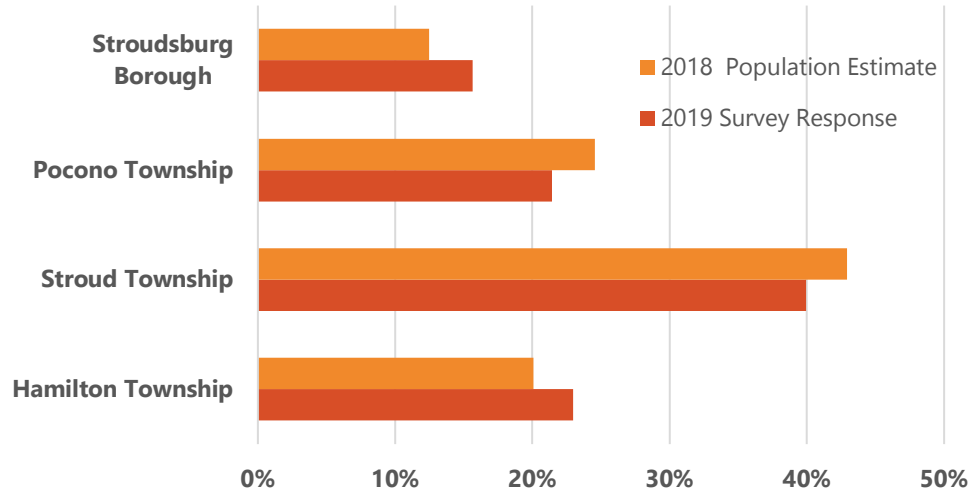


# 2019 Resident Survey

In the summer of 2019, Hamilton, Pocono, and Stroud Townships and Stroudsburg Borough (HSPS) offered a fifteen-question survey about community conditions and topics for the upcoming regional plan update. Four-hundred fifty-five (455) residents responded. A summary of results is provided below.

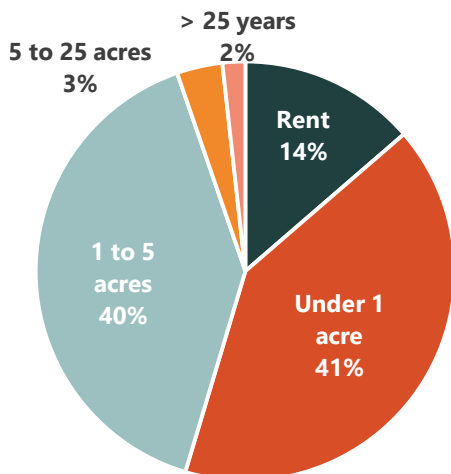
## 1. Which municipality do you live in?

**The survey response reasonably corresponds to the municipal population.** In the survey response, Stroudsburg and Hamilton Township slightly overrepresent their estimated portion of the region while Pocono and Stroud Townships slightly underrepresent their populations.



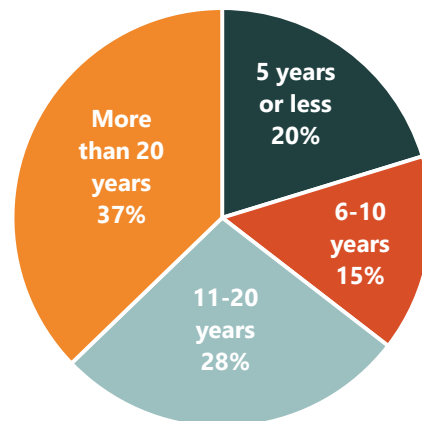
## 2. How much land do you own in your municipality?

**Most respondents own relatively small amounts of land.** More than 80 percent of respondents own either under one acre (40.97%) or between one and five acres (40.97%) of land.



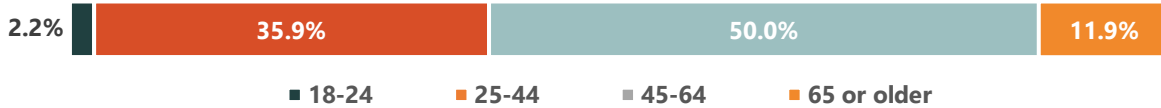
## 3. How long have you lived in your municipality?

**Most respondents are long-term residents.** Most respondents (64.53%) have lived in their municipality for more than 10 years while approximately 35.46 percent of respondents have lived in the municipality 10 years or less.



#### 4. What is your age?

Respondents spanned all age groups but strongly favored residents age 45-64. Half of respondents are 45-64 years old, which also corresponds with the region’s median age of 43.9.



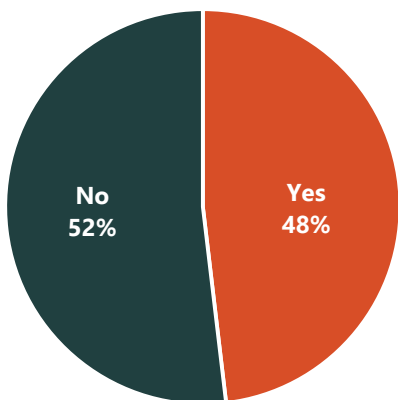
#### 5. What one reason most influenced your original decision to live in the region?

Social ties and affordable housing are common reasons for residency. The highest percentage of respondents (27.53%) choose to live in the HSPS region because of being born or raised there. Far fewer respondents live in the region because of low taxes (6.39%) or job transfer (3.74%).

Reason	Response
Born or raised here	27.5%
Affordable housing costs	15.9%
Close to family and relatives	13.7%
Natural environment	11.5%
Close to work	10.4%
Low taxes	6.4%
Quality of schools	6.4%
Other (please specify)	5.9%
Job Transfer	3.7%

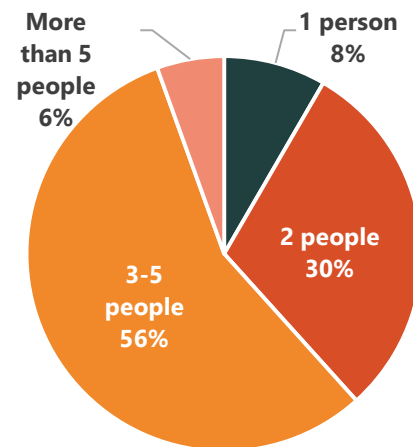
#### 6. Are there school age children in your home?

Respondent households with and without school age children are about equal.



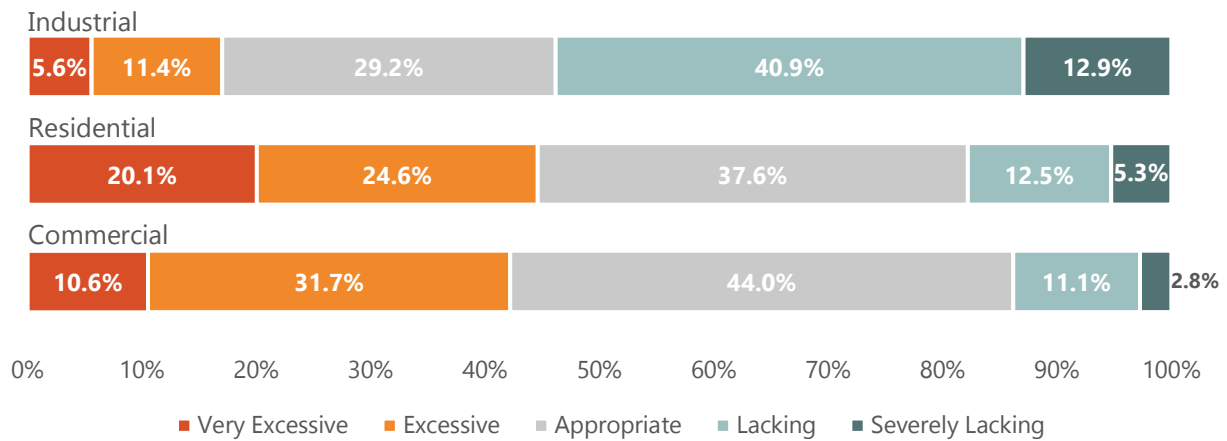
#### 7. How many people are in your household?

Households typically have two to five people. Few live in one-person or more than 5-people households.



### 8. Do you believe the amount of increase in residential, commercial, and industrial development in the region over the last ten years was...?

**Most respondents view the amount of residential and commercial development in recent years as appropriate or excessive but consider industrial development to have lagged.** Most respondents think that the increase in residential development over the last ten years has been either appropriate (43.97%) or excessive/very excessive (41.90%). A similar trend exists for commercial development, although fewer respondents think development has been appropriate (37.59%) versus excessive/very excessive (44.39%). Contrastingly, a majority of respondents (52.87%) think that the increase in industrial development has been lacking/severely lacking.



**9. Please indicate whether you are satisfied or unsatisfied with the following aspects of the region.**

**Respondents are most satisfied with community services and institutions and least satisfied with transportation and local governance aspects of the region.**

Aspect	Very Satisfied/Satisfied	Neutral/Undecided	Unsatisfied/Very Unsatisfied
	Highest rating per aspect shown in bold		
<b>Environment &amp; Culture</b>			
Environmental quality	<b>58%</b>	21%	20%
Rural atmosphere	<b>47%</b>	27%	25%
Quality of life	<b>52%</b>	23%	25%
Social opportunities	<b>50%</b>	30%	20%
<b>Economy</b>			
Access to shopping	<b>76%</b>	13%	11%
Cost of living	24%	20%	<b>55%</b>
Job opportunities	15%	17%	<b>68%</b>
<b>Housing</b>			
Residential communities/neighborhoods	<b>46%</b>	32%	22%
Housing availability	<b>41%</b>	34%	24%
Housing cost	31%	24%	<b>45%</b>
<b>Community Services &amp; Amenities</b>			
Fire service	<b>72%</b>	24%	4%
Ambulance/EMS	<b>67%</b>	25%	7%
Recreational opportunities	<b>64%</b>	18%	18%
Police service	<b>61%</b>	26%	12%
<b>Transportation</b>			
Quality of roads	10%	8%	<b>82%</b>
Traffic volumes	8%	10%	<b>82%</b>
<b>Education</b>			
Schools	<b>55%</b>	26%	19%
Higher education	<b>49%</b>	38%	13%
<b>Utilities</b>			
Quality of water	<b>62%</b>	24%	14%
Public sewer	32%	<b>51%</b>	16%
Telecommunications	27%	23%	<b>50%</b>
Alternative energy support	9%	<b>48%</b>	43%
<b>Local Governance</b>			
Local government assistance/cooperation	26%	<b>44%</b>	29%
School tax rate	11%	18%	<b>71%</b>

**10. Do you agree or disagree that the following are important planning issues facing the region in the next 10 years?**

**Many varied community issues concern most respondents.** The five issues with the highest percentage of respondents that agree or strongly agree are the most important planning issues to address in the next ten years are: road improvements, water quality protection, job creation/retention, traffic congestion, and natural resource protection.

Planning Issues Ranked by Strongly Agree/Agree	Strongly Agree or Agree Responses	
Road improvements	95.4%	<b>90-100%</b>
Water quality protection	90.2%	
Job creation/job retention	88.3%	<b>80-90%</b>
Traffic congestion	88.0%	
Natural resource protection/preserving environmentally sensitive areas	84.2%	
Growth management	83.9%	
Open space preservation	83.4%	
Vitality of town centers	82.3%	
School tax rate	81.2%	
Forestland preservation	80.9%	
Police protection	80.4%	
Drinking water supply	78.5%	
Economic development	77.9%	
Historic preservation	77.4%	
Emergency services	76.6%	
Recreational opportunities	76.0%	
Telecommunications services	74.4%	
Education opportunities	74.1%	
Appearance of commercial development	71.9%	
Housing affordability	71.4%	
Social and cultural opportunities	70.0%	
Sewage disposal	69.8%	<b>60-70%</b>
Pedestrian walkways/bikeways	65.9%	
Out-migration of young adults/young professionals	62.7%	
Public transportation improvements	62.1%	
Hospital	61.9%	
Impacts from regional passenger rail service	59.9%	<b>50-60%</b>
Zoning	56.7%	
Tourism	45.2%	<b>40-50%</b>
Short term rentals (Airbnb)	34.6%	<b>30-40%</b>
Billboards	30.2%	

## 11. Would you agree or disagree with a reasonable increase of public funding to support the following?

**A majority of respondents agree with a reasonable increase in public funding for nearly all of the listed potential investments.** Road improvements, parks and recreation, and increased police/public safety are supported by two-thirds of respondents.

<b>Potential Investments</b> Highest response by rating shown in bold Ranked by Strongly Agree/Agree	Strongly Agree/Agree	Neutral/Undecided	Disagree/Strongly Disagree
Road improvements	<b>77.0%</b>	12.0%	10.4%
Parks and recreation	<b>67.5%</b>	21.2%	11.0%
Increased police/public safety	<b>66.6%</b>	24.6%	8.6%
Protection of environmental resources	<b>62.3%</b>	22.8%	14.7%
Biking, hiking, & walking opportunities	<b>60.1%</b>	22.5%	16.9%
Activities and facilities for seniors	<b>56.7%</b>	30.8%	12.3%
Public sewer and water improvements	<b>52.5%</b>	30.3%	16.9%
Promoting economic development	<b>52.5%</b>	29.9%	17.5%
Improving village business districts	<b>49.1%</b>	33.3%	17.2%
Preservation of historic resources	<b>48.8%</b>	30.6%	19.9%
Public transportation improvements	<b>48.5%</b>	30.8%	20.6%
Regionalized curbside pick-up	<b>47.5%</b>	33.2%	19.0%

## 12. In your opinion, are more of these land uses desirable in the region?

**A majority of respondents agree that more community services and commercial services are desirable.** Uses that are typically larger in scale received mixed ratings.

<b>Land Use</b> Highest response by rating shown in bold Ranked by Strongly Agree/Agree	Strongly Agree/Agree	Neutral/Undecided	Disagree/Strongly Disagree
Recreation/community services	<b>70.9%</b>	24.2%	4.9%
Professional and business services	<b>59.9%</b>	27.5%	12.5%
Small scale retail	<b>58.1%</b>	21.2%	20.5%
Personal services	<b>55.0%</b>	37.0%	8.0%
Healthcare services	<b>55.0%</b>	28.1%	16.8%
Restaurants	49.8%	28.0%	21.7%
Manufacturing	45.9%	26.0%	28.1%
Corporate/business parks	41.3%	26.6%	32.1%
Warehousing/distribution	29.1%	28.7%	<b>42.2%</b>
Large scale retail	25.7%	23.3%	<b>50.8%</b>
Automotive	25.4%	<b>45.4%</b>	29.1%

### 13. Do you agree or disagree that the following are serious transportation issues in the region?

A majority of respondents believe that many aspects of transportation – from road and traffic conditions to sidewalks and bikeways to mobility services – are serious issues in the region. More than 90 percent of respondents agree or strongly agree that the Route 611 Corridor and road maintenance are serious transportation issues in the region.

<b>Transportation Issue</b> Highest response by rating shown in bold Ranked by Strongly Agree/Agree	Strongly Agree/Agree	Neutral/Undecided	Disagree/Strongly Disagree
Route 611 corridor	<b>91.7%</b>	6.1%	1.9%
Road maintenance	<b>91.1%</b>	6.5%	1.3%
Interstate 80 corridor	<b>86.6%</b>	5.4%	7.6%
Keeping scenic roads scenic	<b>83.8%</b>	11.9%	3.8%
Traffic volumes on other township roads	<b>74.8%</b>	20.8%	3.8%
Route 33 corridor	<b>72.3%</b>	14.5%	12.4%
Route 209 corridor	<b>67.2%</b>	23.6%	8.9%
Mobility for senior citizens	<b>65.9%</b>	26.6%	7.0%
Business route 209 corridor	<b>64.0%</b>	25.6%	9.9%
Parking in Stroudsburg	<b>63.7%</b>	24.0%	11.8%
Additional sidewalks	<b>57.3%</b>	24.9%	17.5%
Route 715 corridor	<b>52.2%</b>	34.6%	12.7%
Additional bikeways	<b>50.6%</b>	29.7%	19.4%

### 14. Do you agree or disagree that the following are serious housing issues in the region?

Nearly two-thirds of respondents believe that housing availability for seniors and housing affordability are the most serious housing issues. Availability of retirement communities and availability of housing for first-time buyers were other serious housing issues for a majority of respondents.

<b>Housing Issue</b> Highest response by rating shown in bold Ranked by Strongly Agree/Agree	Strongly Agree/Agree	Neutral/Undecided	Disagree/Strongly Disagree
Availability for housing for seniors	<b>65.9%</b>	28.4%	5.4%
Housing affordability	<b>65.9%</b>	24.6%	9.2%
Availability of retirement communities	<b>59.2%</b>	32.0%	8.6%
Availability for housing for first-time buyers	<b>55.1%</b>	28.1%	16.6%
Availability for rental housing	<b>47.5%</b>	35.1%	17.2%
Alternatives to single-family housing	<b>43.9%</b>	41.1%	15.0%

**15. Would you agree or disagree that there should be more cooperation among municipalities in the HSPS region in the following areas?**

**Respondents are in favor of increased cooperation among municipalities.** More than 50 percent of respondents either agree or strongly agree that there should be more cooperation among HSPS municipalities in all eight listed areas. Cooperation in solving transportation problems was most agree upon, at 80.89 percent.

<b>Issue or Service</b> Highest response by rating shown in bold Ranked by Strongly Agree/Agree	Strongly Agree/Agree	Neutral/Undecided	Disagree/Strongly Disagree
Solving transportation problems	<b>80.9%</b>	15.97%	2.9%
Emergency medical service	<b>72.0%</b>	23.15%	4.1%
Regional police protection	<b>66.9%</b>	22.93%	10.2%
Regional fire protection	<b>66.2%</b>	23.08%	10.2%
Joint zoning ordinances	<b>57.3%</b>	32.69%	9.6%
Curbside garbage pick-up	<b>56.7%</b>	27.56%	15.3%
Public sewer service	<b>53.8%</b>	33.65%	12.1%
Public water service	<b>52.2%</b>	35.14%	12.4%